



Devon Partnership  
NHS Trust

# CONSULTANT PSYCHIATRIST

The Cedars, Exeter, Devon  
(Two posts)



*Supporting you to live well*

# Contents

Welcome	4
About the job and the team	6
Why choose us?	10
Our vision	12
Living our values	13
At a glance facts	14
Our services	15
Our performance 2017/18	16
Devon	18
Working here	20
Living here	20

## **Further information**

To find out more about all the services we offer, please visit  
[www.dpt.nhs.uk/our-services](http://www.dpt.nhs.uk/our-services)



Second Floor

Stairs  
Delderfield  
First Floor



# WELCOME

**This is a great time to be joining a supportive, vibrant, fun and diverse consultant group at Devon Partnership NHS Trust.**

Living in Devon offers you a fantastic lifestyle and a beautiful place to live and work— even your commute to work can lead you alongside the coast or over the moors. Throughout the county there are exceptional schools, and you'll never be short of activities to fill your evenings and weekends – from cycling, walking and water sports to city shopping trips, theatre, bustling nightlife and great restaurants. Quaint market and seaside towns are dotted across the county. Our communities are active, supportive and friendly. London is just a three hour train journey away, and Exeter airport offers flights to destinations nationally and across Europe.

All our consultants have 2.5 Programmed Activities for Supporting Professional Activities and we encourage them to participate in leading the organisation through service development and Quality Improvement as well as networking with colleagues in monthly specialty peer groups and across the county at our quarterly all-day Medical Advisory Committee. You'll also be able to get involved in organisational-wide events and have access to many training and research opportunities through our highly rated Research and Development Department affiliated to the Universities of Exeter and Plymouth.



## Our mission

“ To become a recognised centre of excellence in the field of mental health and learning disability within the next five years. ”

We are incredibly proud to be a Trust which is led by clinicians and those using its services, rated 'Good' by the CQC, with excellent local and national performance, for being in financial balance for the last 10 years and to be further expanding and developing our services. Clinicians are leading the development of our own electronic patient record to support great care and the opening of our brand new Psychiatric Intensive Care Unit (The Junipers) and our Mother and Baby Unit (Jasmine Lodge). It has also just been announced that we have been successful in our £8 million bid to build a brand new 16 bed adult ward in Torbay. From April 2019 we will also be providing mental health services for children as part of an alliance with local NHS Trusts, enabling us to be able to provide comprehensive care across all life stages and we will be expanding our commissioning role for the whole of south west secure service to other specialist services.

We have opportunities in community and inpatient services across our mental health and learning disability services including regional specialist services.

Whether you are newly qualified, experienced or recently retired and looking for a great quality of life, there is a place for you here in a rewarding job within a great team. Please do not hesitate to contact me via my secretary on 01392 208 867 to discuss our opportunities and your requirements.

**Dr David Somerfield** MB ChB FRCPsych  
Medical Director, Consultant Psychiatrist &  
Associate Registrar in Leadership and Management  
Royal College of Psychiatrists  
[@d\\_medical](#)

[www.dpt.nhs.uk/about/who-we-are](http://www.dpt.nhs.uk/about/who-we-are)  
[www.dpt.nhs.uk/about/who-we-are/our-board-of-directors](http://www.dpt.nhs.uk/about/who-we-are/our-board-of-directors)

# ABOUT THE JOB AND THE TEAM

We are advertising two Consultant Psychiatrist posts for inpatient care for our two acute inpatient wards at The Cedars, Wonford House in Exeter, Devon.

- **Delderfield Ward – 16 beds - serving the population of Exeter**
- **Coombehaven Ward – 16 beds - serving the population of East Devon and part of Exeter**

In 2017 there were around 200 admissions to each of the wards. Average length of stay was 29 days, 68% of patients were detained on admission. On average, there are two Managers Hearings/Mental Health Act Review Tribunals per month.

Your primary clinical responsibilities will be to provide expert medical psychiatric assessment, treatment and care to inpatients on the designated ward and to undertake Mental Health Act Assessments within Exeter East Mid and North Devon between 9am and 5pm, Monday to Friday excluding Bank Holidays, on a rota basis (approx 1:32).

There is a separate 0.6 WTE Consultant Psychiatrist for the Exeter Crisis Resolution Home Treatment Team (CRHT) and also for the East and Mid Devon Crisis Resolution Home Treatment Team.

The Urgent and Inpatient Care teams are similarly covered by a total of 1.6 WTE consultants.

The postholders will replace existing consultant psychiatrists that have been in post for a considerable time.

**£77,913 - £105,042**  
**Relocation up to £8K**  
**Recruitment premium negotiable**

<https://www.dpt.nhs.uk/our-services/adults/urgent-and-inpatient-care/admission-to-hospital>



*Nursing Team - The Cedars*



## *Local working arrangements*

### **The Cedars team**

The staff team for The Cedars includes a Band 8 senior nurse manager that covers both wards. Delderfield ward is staffed by a Band 7 ward manager, three Band 6 assistant ward managers, twelve Band 5 staff nurses, 2 Band 4 trainee practitioners and nine Band 3 health care assistants. The Cedars is served by an Occupational Therapy Team made up of two Band 6s, two Band 5s and two Band 3s.

Patients may be admitted to the ward if their home treatment is not successful or inpatient treatment will provide more appropriate support and environment. In-reach by community-based teams is encouraged to provide continuity of care throughout admission.

A senior nurse manager oversees the inpatient services as well as the team leaders for the crisis and home treatment service.

The Exeter East and Mid Devon Urgent and Inpatient Care (UIC) Clinical Governance meeting occurs weekly. This meeting provides a forum for the senior locality inpatient and CRS clinicians and managers to focus on addressing areas of unmet need, timely access to health and social care funding and liaison with other agencies (both statutory and non-statutory) and to address communication issues that may have arisen.

*Lounge - The Cedars*

## Crisis Resolution and Home Treatment Service

The CRHT team “gate-keep” all admissions from the locality to the ward. GPs can refer directly to CRHT but most patients are referred by the locality community mental health teams including early intervention service and assertive outreach service. CRS team members act as care coordinators to maintain good communication and to facilitate early discharge back to the referring team. There is a separate CHRT for Exeter and for East & Mid Devon with each locality providing consultant input.

## Trainee Doctors

Each postholder will be supported by two trainee doctors (F2 and CT1) who will see suitable inpatients under strict consultant supervision. Clinical supervision for both junior doctors will be given by the postholder. There is a designated Clinical Tutor, Dr Peter Noble, who is responsible for educational supervision of the junior doctors on the Exeter rotation.



Exeter library

## Clinical Duties

Both postholders will be based at Wonford House Hospital, with an office with a personal PC, enabled for both intranet and internet access and 0.5 WTE dedicated secretarial support (this post is full-time but shared with other UIC consultants) will be provided. Routine secretarial cover is provided at other times.

The post holder will:

- Work within a multidisciplinary framework to lead the clinical meetings, review inpatients' treatment and diagnosis, and attend risk assessment, pre-discharge, ward community and staff support meetings.
- Supervise junior doctors.
- Maintain good communication with the local community and rehabilitation Consultants, teams and managers.
- Be expected to be available for daytime Mental Health Act assessments on a rota basis (approximately 1:32) with other consultants from the Exeter East Mid and North Devon. There is no fee payable for this service as is part of the job plan.
- Provide cross-cover with the other full time inpatient consultant psychiatrist at the Cedars.
- Act as Responsible Clinician (RC) for patients detained under the Mental Health Act, write reports for Mental Health Tribunals, Managers Review Hearings or others bodies and attends MHA hearings and Section 117 after care meetings.



## *Continuing professional development (CPD)*

CPD is actively supported by the Trust. Study leave is available for training and continued professional development. Overseas CPD events are to be approved by the Clinical Director/Associate Clinical Director. Study leave entitlement is 33 days over 3 years.

## *Further information about the job*

Please refer to the more detailed Job Description and Person Specification for each post, for more information.

## *About Exeter*

Exeter has a population of 119,600 (Office of National Statistics 2012) and has a relatively large economy, ranked 89th largest in the country and has below average unemployment figures. Deprivation in Exeter is below the national average, ranking 145th out of 354 districts in England (where 1 has the highest deprivation, Index of Multiple Deprivation Score). There are generally good levels of health and below average 'worklessness', as measured by the incapacity claimant rate. Overall, crime levels are average, ranking 130th out of 376 districts in England and Wales.

“ It was by chance that I came to Devon. I saw the job advert and applied. I remember coming down on the train from The Midlands to Exeter and suddenly seeing the scenery changing. I thought ‘wow’, this looks like a nice place. I sat the interview, got the job but I wasn’t really sure about moving so far away, but looking back and choosing to live in Devon was the best decision I made. I absolutely feel at home in Devon, everyone is friendly and welcoming and it has a fantastic relaxed atmosphere. ”

**Antony**, Community Consultant Psychiatrist



# WHY CHOOSE US?

**If you're looking for an innovative and rewarding place to work - and a beautiful place to live - then Devon Partnership NHS Trust is the organisation for you.**

We have been rated as 'Good' by the Care Quality Commission (CQC) and are committed to becoming an 'Outstanding' organisation.

We are driven by a passion to improve the lives of the people who use our services and their families. We are passionate about promoting good mental health and wellbeing and about delivering high quality mental health and learning disability services that are safe and focused on people's recovery.

You'll play a pivotal role in everything we do. We are committed to involving you fully in the development of our organisation and our services.

***Together***, we can achieve our ambition to create a great place to work with a shared sense of pride and ambition.

We will do everything we can to support and develop you:

- Flexible working
- Health and wellbeing programmes
- Team-based approach
- Focus on career and leadership development
- Fantastic CPD opportunities
- Involvement in ground breaking research.



## CQC rating

We were proud and delighted to have been given an overall rating of '[Good](#)' for our mental health services in Devon. It is our aim to achieve a rating of 'Outstanding' by 2021.

Overall rating	Inadequate	Requires improvement	Good	Outstanding		
	Safe	Effective	Caring	Responsive	Well led	Overall
Acute wards for adults of working age and psychiatric intensive care units	Requires improvement	Good	Good	Good	Good	Good
Community mental health services for people with learning disabilities or autism	Good	Good	Good	Good	Good	Good
Community-based mental health services for adults or working age	Requires improvement	Requires improvement	Good	Requires improvement	Requires improvement	Requires improvement
Community-based mental health services for older people	Good	Good	Good	Good	Good	Good
Forensic inpatient/secure wards	Good	Outstanding ★	Outstanding ★	Good	Outstanding ★	Outstanding ★
Long stay/rehabilitation mental health wards for working age adults	Good	Good	Good	Good	Good	Good
Mental health crisis services and health-based places of safety	Good	Good	Good	Good	Good	Good
Wards for older people with mental health problems	Good	Good	Good	Good	Good	Good
Wards for people with learning disabilities or autism	Good	Good	Good	Good	Good	Good

# OUR VISION

A clear vision is the basis for any organisation to move forward. Our Vision has already helped us to think far more clearly about our journey over the next few years, and helped our staff, partners and people using our services to gain a better understanding of what is important to us as we move forwards.

## Our aims

- To deliver consistently high quality care and treatment
- To ensure our services are driven by the voices of people who use them
- To build a reputation as a recognised centre of excellence and expertise
- To attract and retain talented people and to create a great place to work, with a shared sense of pride and ambition
- To challenge discrimination and stigma and to champion recovery, inclusion and wellbeing
- To be an efficient, thriving and successful organisation with a sustainable future.

## To achieve this we will:

- **Involve** - Ensure that the people who use our services are driving and shaping them
- **Innovate** - Actively pursue innovative solutions and new opportunities to develop
- **Integrate** - Work with our partners to deliver high quality, joined-up services
- **Improve** - Strive for excellence in everything we do
- **Inspire** - Share our enthusiasm and passion
- **Include** - Promote equality, value diversity and champion recovery.

“ An inclusive society where the importance of mental health and wellbeing is universally understood and valued. ”



# LIVING OUR VALUES

Our values are the values of the NHS and underpin everything we do:



## **Working together for patients**

### ***Involve***

Ensuring that our services are driven and shaped by the involvement of people who use them



## **Commitment to quality of care**

### ***Innovate***

Actively pursuing innovative solutions and new opportunities to develop



## **Everyone counts**

### ***Integrate***

Working with our partners to deliver high quality, joined-up services



## **Compassion**

### ***Inspire***

Sharing our enthusiasm and passion



## **Respect and dignity**

### ***Include***

Promoting equality, valuing diversity and championing recovery



## **Improving lives**

### ***Improve***

Striving for excellence in everything we do

# AT A GLANCE FACTS

With 50+ sites and 2,600 miles across Devon and a far larger regional area, Devon Partnership NHS Trust has...



“The heart of my working day is seeing people and making sure they have a good experience of coming here. There are many things we can’t control but making their experience the best it can be when they visit the clinic is one we can. And it’s magical. It really is.”

David, Associate Specialist

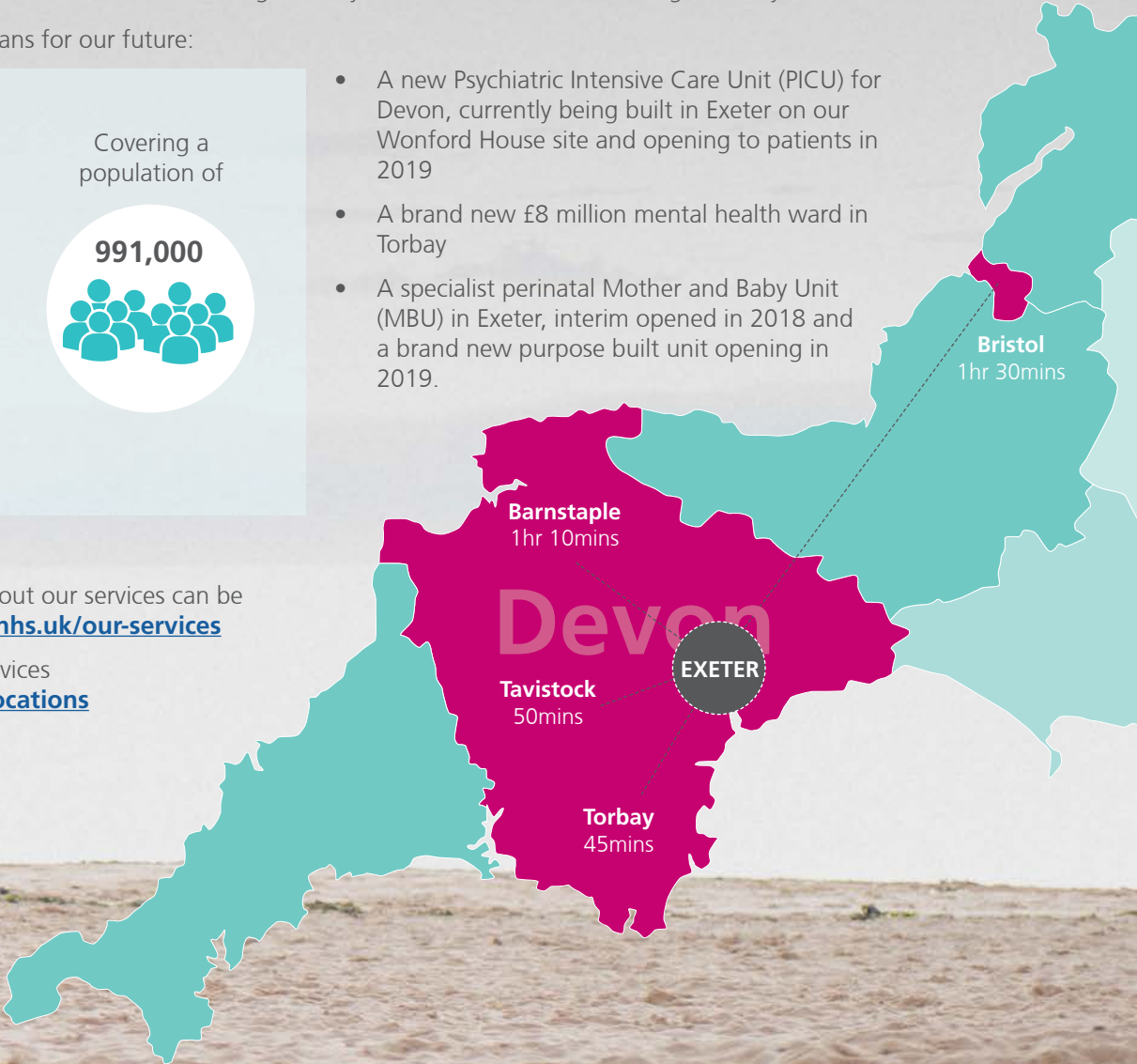
# OUR SERVICES

Many of our services have attracted national plaudits and recognition and we are rightly proud of the many services in Devon and Bristol that are leading the way in mental health and learning disability.

We have exciting plans for our future:

- A new Psychiatric Intensive Care Unit (PICU) for Devon, currently being built in Exeter on our Wonford House site and opening to patients in 2019
- A brand new £8 million mental health ward in Torbay
- A specialist perinatal Mother and Baby Unit (MBU) in Exeter, interim opened in 2018 and a brand new purpose built unit opening in 2019.

More information about our services can be found at [www.dpt.nhs.uk/our-services](http://www.dpt.nhs.uk/our-services) and a map of our services [www.dpt.nhs.uk/locations](http://www.dpt.nhs.uk/locations)

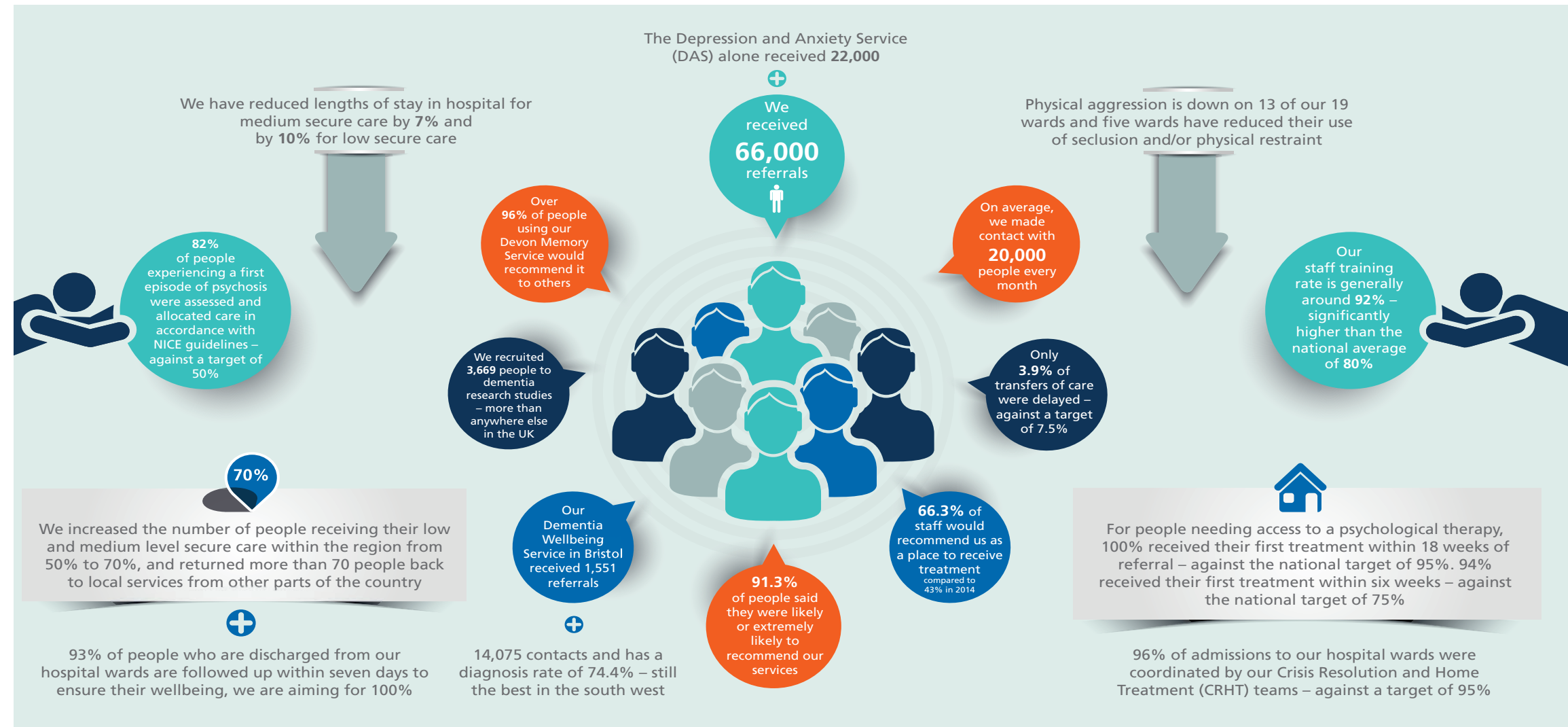


# OUR PERFORMANCE 2017/18

## FURTHER INFORMATION

Corporate information: [www.dpt.nhs.uk/about/corporate-information](http://www.dpt.nhs.uk/about/corporate-information)

Resources library: [www.dpt.nhs.uk/resources](http://www.dpt.nhs.uk/resources)



## Annual Reviews and Quality Accounts



**Annual Review**  
2017/18



Supporting you to live well

**70**  
YEARS  
OF THE NHS  
1948-2018

[click here for more information](#)



## Devon

Join us at Devon Partnership NHS Trust and you'll be part of a team that is compassionate and supportive, and genuinely committed to working together with the people who use our services, their families and carers in everything that we say and do.

*It really is a great  
place to work  
and a great  
place to live*

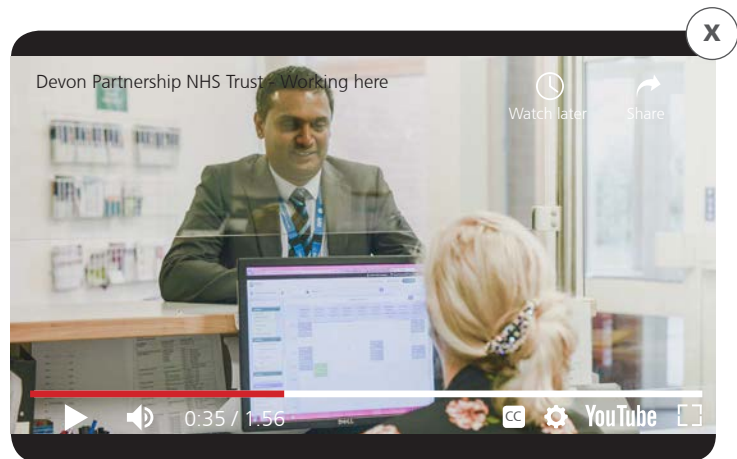
The Quay - Exeter



## Working here

As a professional you'll have the opportunity to network with colleagues, discuss service and quality improvements and share ideas as a member of our Medical Advisory Committee. Meetings are held across Devon, from Barnstaple to Dartmoor to Torbay. You'll also be able to get involved in organisational-wide events. If you choose you can broaden your horizons with involvement at regional and national levels.

London is only 2 and half hours away by train.



[jobs.dpt.nhs.uk/locations/working-here](https://jobs.dpt.nhs.uk/locations/working-here)



[jobs.dpt.nhs.uk/locations/living-here](https://jobs.dpt.nhs.uk/locations/living-here)

## Living here

We are committed to you having a strong worklife balance and your health and wellbeing is important. We offer a range of initiatives to support you both at work and outside of work.

Devon was recently voted 'The Best Place to Live in England' and it's no wonder with stunning landscapes and vibrant cities. Whether you're interested in urban or rural, culture or nature or looking for a great foundation for your family, Devon has it all.

Our flexible working policy supports you to make the most of living and working in this beautiful part of the country.

# KEY LEADERS

Many of our medical leaders have national roles with the Royal College of Psychiatry and NHS England:

**Dr Kate Lovett** - Dean of Royal College of Psychiatrists  
[@DrKateLovett](#)

**Dr Jo Black** - Appointed Associate National Director for Perinatal Mental Health for NHS England  
[@BlackJo2](#)

**Dr John Dean** - Appointed to NHS England advisory role in gender services

**Dr Adrian James** - Registrar of the Royal College of Psychiatrists  
[@DrAdrianJames](#)

**Dr Peter Aitken** - Member of the Executive Committee of the faculty of Liaison Psychiatry at The Royal College of Psychiatrists  
[@DrP8ken](#)

# APPLY TODAY!

Our current vacancies are listed on our jobs website - [www.jobs.dpt.nhs.uk/doctors](http://www.jobs.dpt.nhs.uk/doctors) and also on NHS Jobs

Call to find out more or for an informal chat -

Medical Staffing Team  
**01392 208 506**  
**Dpn-tr.medicalrecruitment@nhs.net**



You can also follow **@DPT\_Jobs** and **@DPT\_NHS** on Twitter.

We are an equal opportunities employer and all applications will be welcomed and considered regardless of a person's age, sex, religion, marital status, sexual orientation or ethnic origin. We also welcome disabled candidates and are a disability confident employer.

“ Since the NHS was founded on 5 July 1948 there have been huge changes in the way we think about mental health and learning disability – and in how we support people. Take a look at some of the key milestones and developments over the last 70 years and how they have affected what we do in Devon. ”

Read more at [www.dpt.nhs.uk/timeline](http://www.dpt.nhs.uk/timeline)

Devon Partnership NHS Trust  
Wonford House  
Dryden Road  
Exeter  
EX2 5AF

[www.dpt.nhs.uk](http://www.dpt.nhs.uk)

Reference: 633/12/18

